

## **Deck Construction Application and Residential Deck Guide**

Please provide a minimum of one site specific plan view sketch and one filled out deck detail form, or equivalent. The fillable Deck Detail Form and 3 examples of plan view sketches are provided in the following Deck Guide. Drawings should include the following information at a minimum:

1. Typical deck detail to include:

- a. Floor joist: type of wood, grade of wood, size, on-center spacing
- b. Beam: size, number of ply's, type, grade
- c. Post: size, type and grade, spacing, location of posts
- d. Pier footing: dia. or square size, thickness, number of piers, location, on center spacing
- e. Decking: type, thickness
- f. Ledger at house: type of wood, size of wood ledger, fastener – type size of wood.  
on center spacing
- g. Flashing detail

2. Guardrail detail include:

- a. Deck guardrail: Height, post location and on center spacing, guardrail post connection, spacing of vertical guards, and general construction.

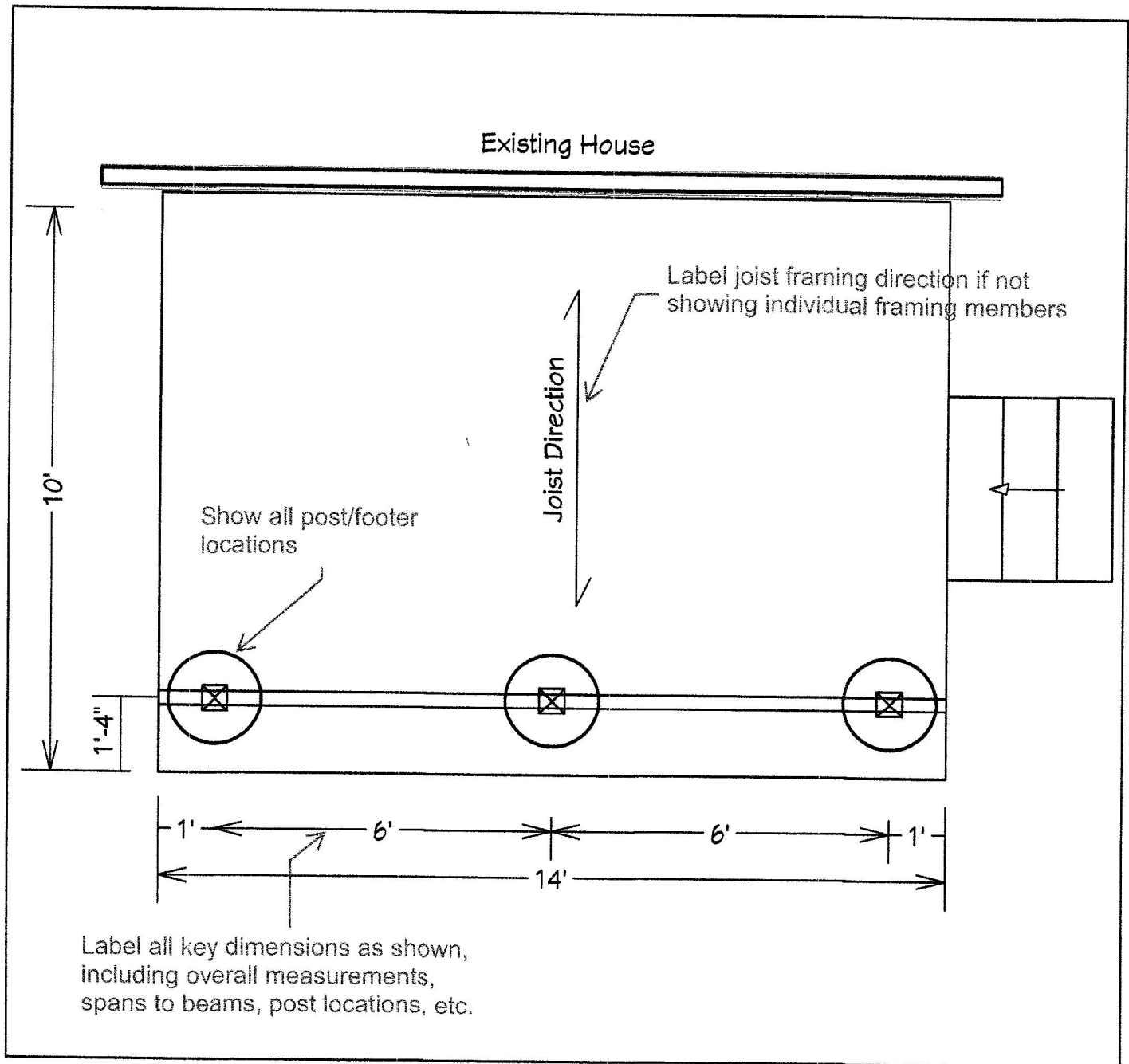
3. Stair detail to include:

- a. Riser: height, tread depth, riser's openings not to exceed 4" or closed
- b. Stringers: amount and size
- c. Handrail: type, location and size of graspable handrail
- d. Guardrail: height, location, guard spacing and general construction

Deck construction guideline requirements are general required information which should apply to most deck construction.

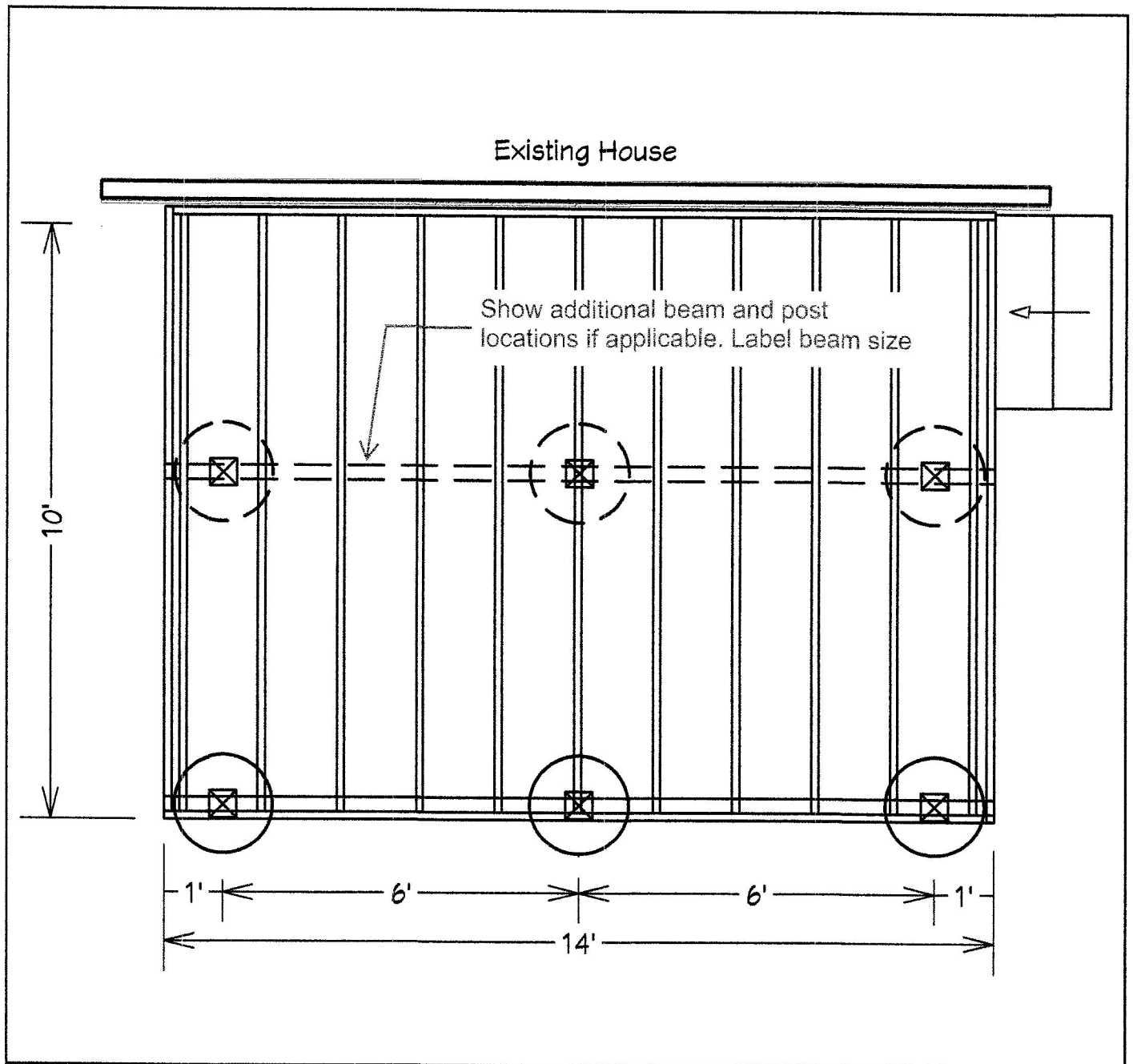
## Sample Plan View #1 (Deck with cantilevered floor joists)

This drawing is an example of what you need to include in your submission.  
A job specific sketch is required for each permit application.



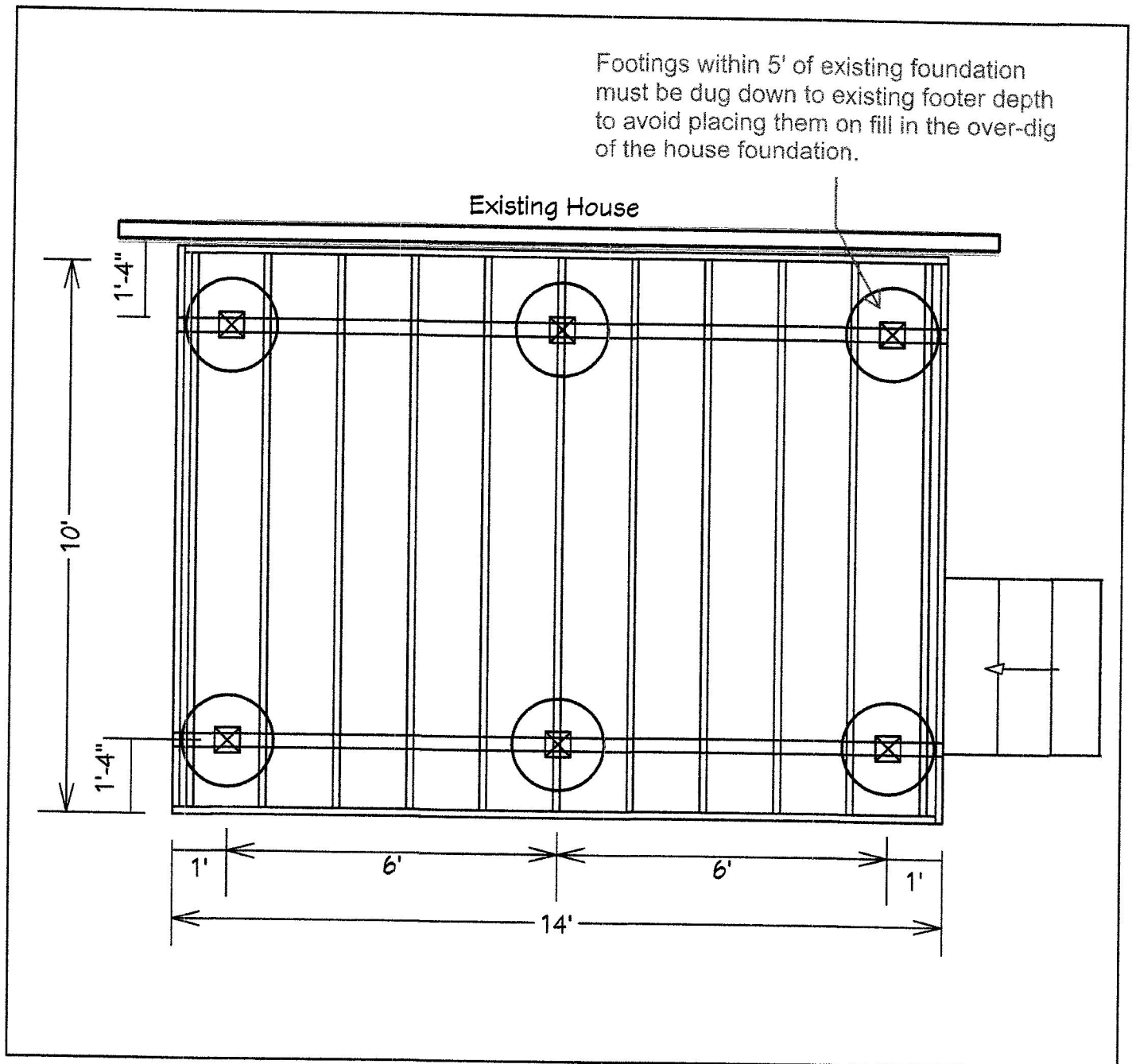
## Sample Plan View #2 (No cantilever and optional 2nd beam)

This drawing is an example of what you need to include in your submission.  
A job specific sketch is required for each permit application.



### Sample Plan View #3 (Freestanding deck)

This drawing is an example of what you need to include in your submission.  
A job specific sketch is required for each permit application.





## Sample Deck Detail Form

This is an example of the fillable Deck Detail Form provided to you on the last page of this Guide.

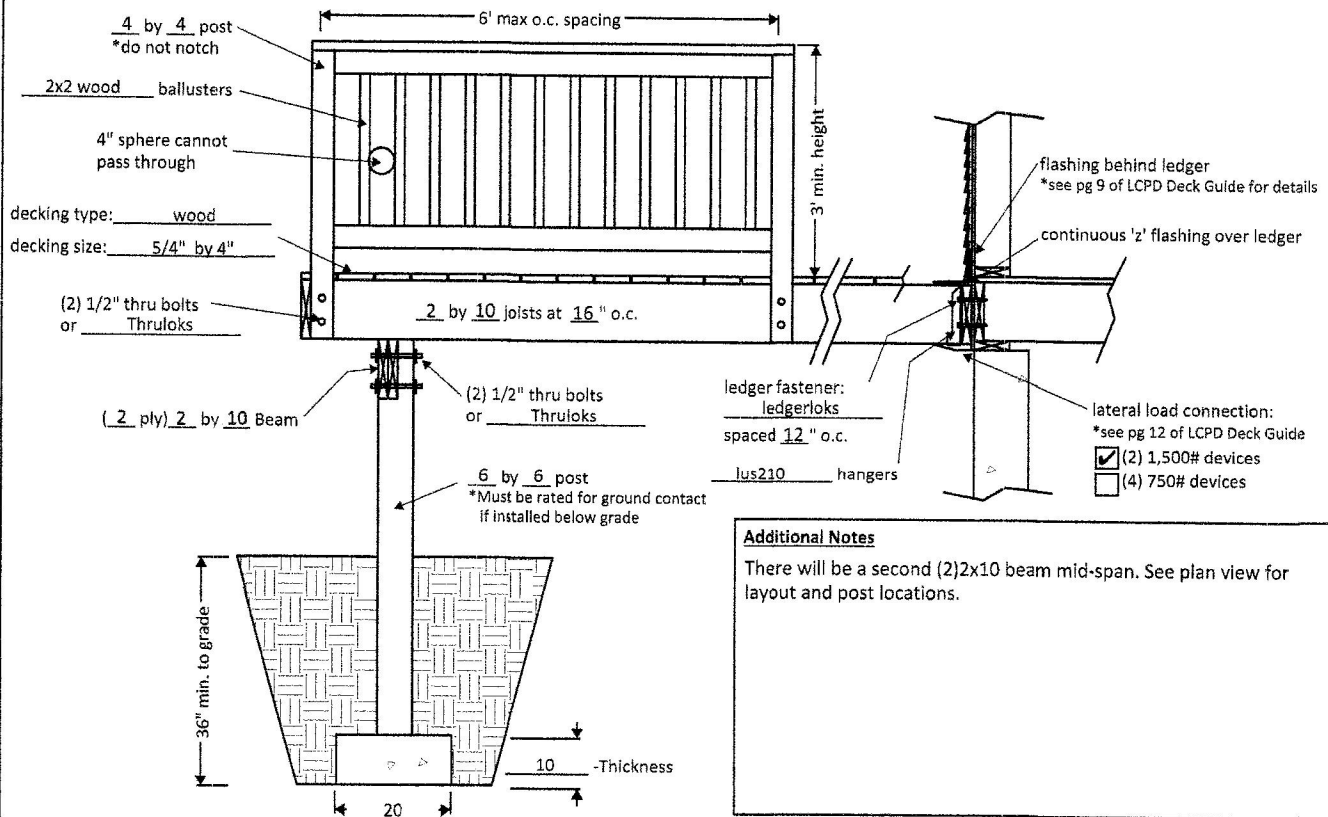
Please note or provide additional sketches for any details that are unique to your specific job or site.

### LCPD Residential Deck Detail Form

Please fill out all applicable information. Add any non-typical details to this drawing or include details/dimensions/layouts with plan-view sketch.

Job Address: 123 Sample Street

\*All lumber to be pressure treated southern yellow pine (type) & #2 (grade) unless noted otherwise



## Deck Design Requirements

The pages provided at the end of this document are the prescriptive design requirements from the current International Residential Code (IRC). They contain charts and information on many of the construction details needed to design and build a deck up to code standards. Please review in detail and follow all requirements when designing your deck.

## Deck Design Appendix

The following excerpts are provided to give additional detail to code requirements, or to provide information on alternate construction methods

### Appendix Item #1 - LedgerLok Fastener Pattern

Visit website for most recent publications from manufacturer.

<https://www.fastenmaster.com/product-details/ledgerlok-ledger-board-fastener.html>

#### FASTENING PATTERN

Determine the proper spacing of LedgerLOK fasteners from Table 1 below based on:

- Live load requirement for your local code
- Ledger material being attached to the house
- Rim material that you are attaching to
- Joist span as measured from the ledger to the first supporting beam

**TABLE 1: Fastening pattern for attachment of ledger to rim board using LedgerLOK**

Live Load	Ledger Material	Rim Material	6' or Less	Up to 8'	Up to 10'	Up to 12'	Up to 14'	Up to 16'	Up to 18'
40 psf	Doug. Fir or S. Pine	2x Lumber	24	18	14	12	10	9	8
		EW Rim	25	19	15	12	10	9	8
	Hem Fir	2x Lumber	20	15	12	10	8	7	6
		EW Rim	25	19	15	12	10	9	8
60 psf	Doug. Fir or S. Pine	2x Lumber	17	13	10	8	7	6	5
		EW Rim	18	13	10	9	7	6	6
	Hem Fir	2x Lumber	14	11	8	7	6	5	4
		EW Rim	18	13	10	9	7	6	6

LedgerLOK fastening patterns outlined in this table provide equal or better performance to lag screw patterns in the 2009 and 2012 IRC in accordance with IRC sections R104.11 and in accordance with generally accepted engineering practice. Design values used to create these patterns were derived from individual fastener testing under ICC Acceptance Criteria AC233 (ESR #1078) as well as full system testing directly comparing lag screw and LedgerLOK performance in ledger to rim connections using generally accepted industry standards used to generate the IRC fastener spacing tables for lag screws.

- **Ledger materials** must be a minimum of 2 x 8 nominal dimensional pressure-preservative-treated No. 2 lumber from any of the following species: Hem-Fir, SPF, Douglas Fir or Southern Pine.
- **Rim joist materials** must be either solid sawn 2x lumber or engineered wood specifically designated by the manufacturer as rim material. 2x lumber may be of any species greater than 0.42 specific gravity, including SPF, HF or DF. Engineered Wood (EW) Rim may be OSB, LSL or LVL material measuring 1" or greater in thickness.
- **Sheathing** of 15/32" or 7/16" OSB may separate the ledger and rim but must be attached per code. For additional materials between ledger and rim, please refer to the guidelines below.

Wet service conditions have been tested for and applied to the patterns above. No further reductions for wet service need to be applied.

The code-standard dead load for building materials of 10 pounds per square foot is assumed in all calculations above.

LedgerLOK Deck Ledger to Rim Joist Table from LedgerLok's website - 6/30/2022

## Appendix Item #2 - Typical Wood-Framed Guardrail

**Figure 24. Example Guard Detail.**

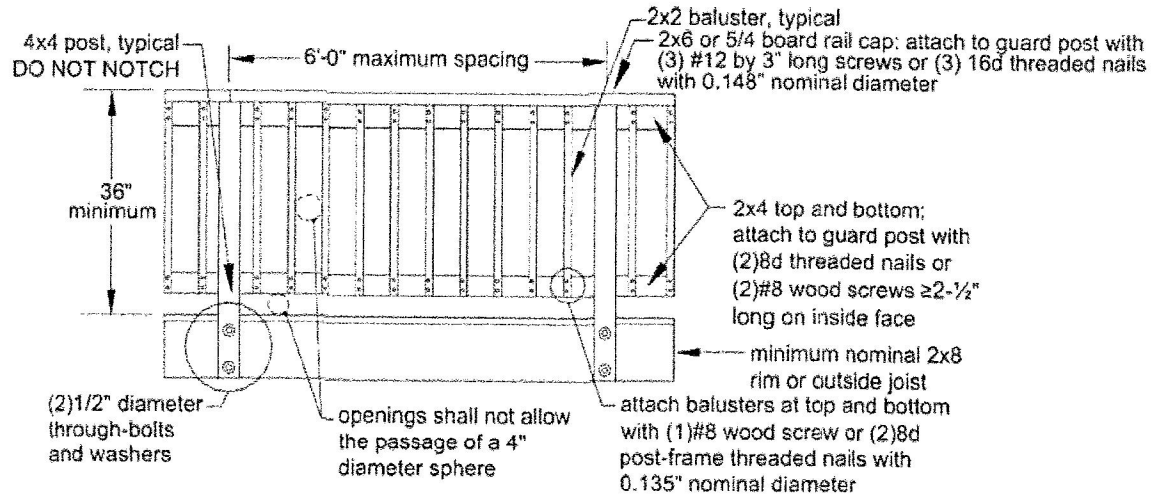
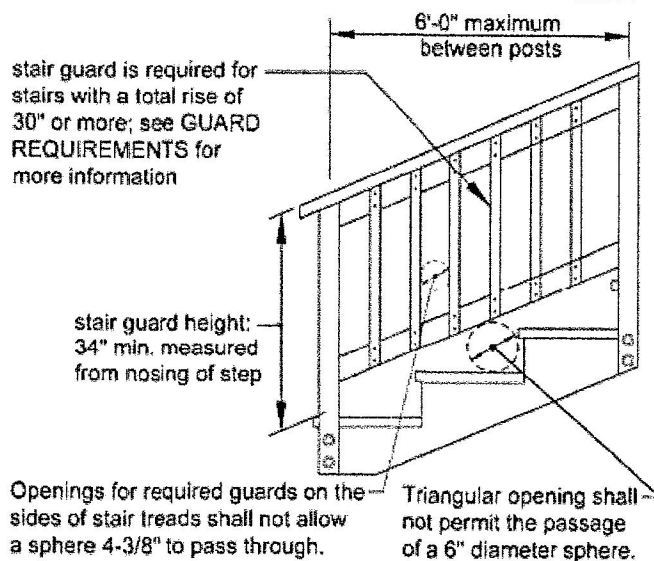


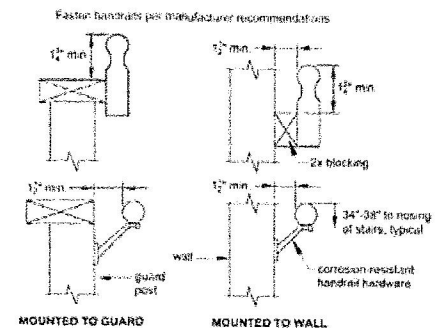
Figure from AWC Prescriptive Residential Deck Guide (2015) | Page 19

## Appendix Item #3 - Stair Guardrail and Handrail Details

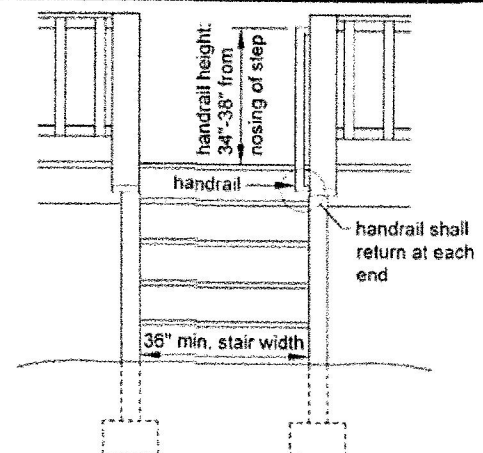
**Figure 30. Stair Guard Requirements.**



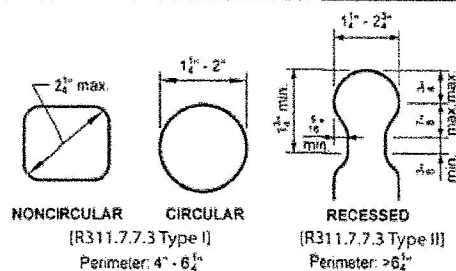
**Figure 32A. Handrail Mounting Examples.**



**Figure 33. Miscellaneous Stair Requirements.**



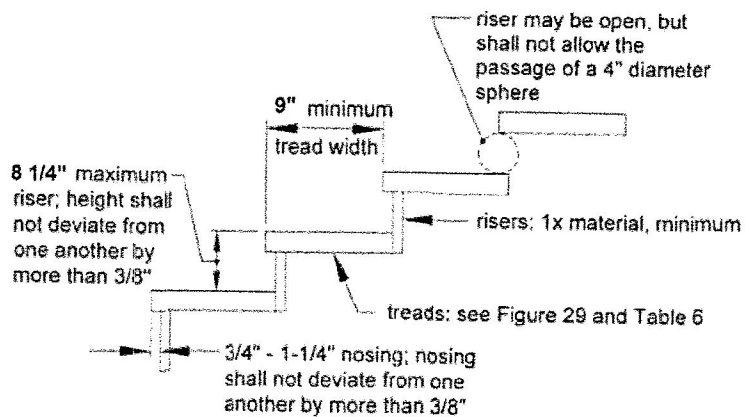
**Figure 32B. Handrail Grip Size.**



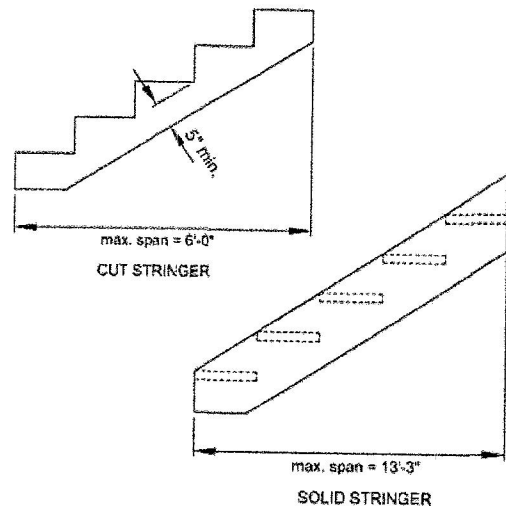
Figures from AWC Prescriptive Residential Deck Guide (2015) | Pages 21 & 22

## Appendix Item #4 - Stair Details

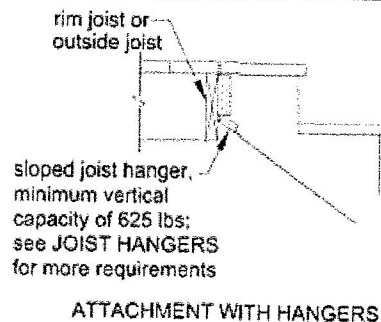
**Figure 27. Tread and Riser Detail.**



**Figure 28. Stair Stringer Requirements.**



**Figure 31. Stair Stringer Attachment Detail.**



Figures from AWC Prescriptive Residential Deck Guide (2015) | Pages 20 & 21

## Appendix Item #5 - Framing Around a Cantilevered Chimney

**Figure 35. Detail for Framing Around a Chimney or Bay Window.**

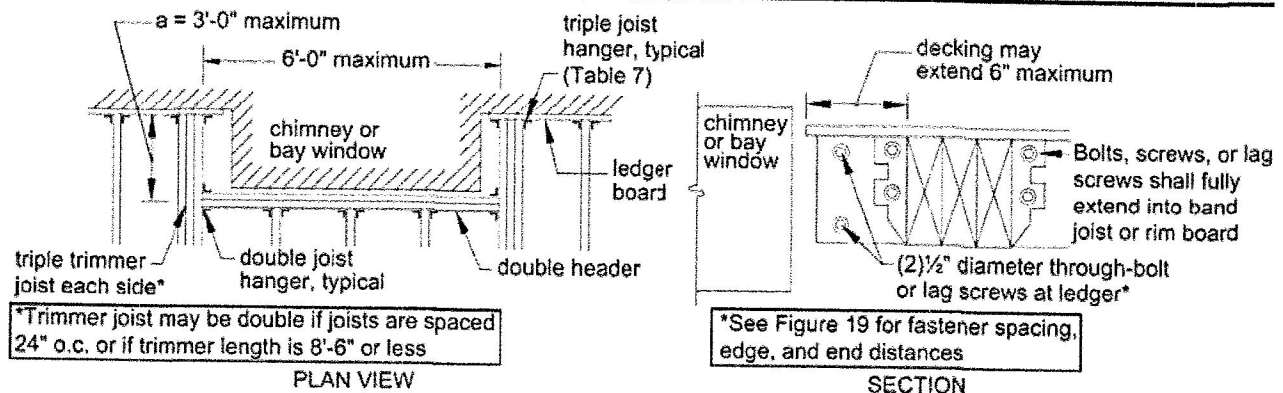


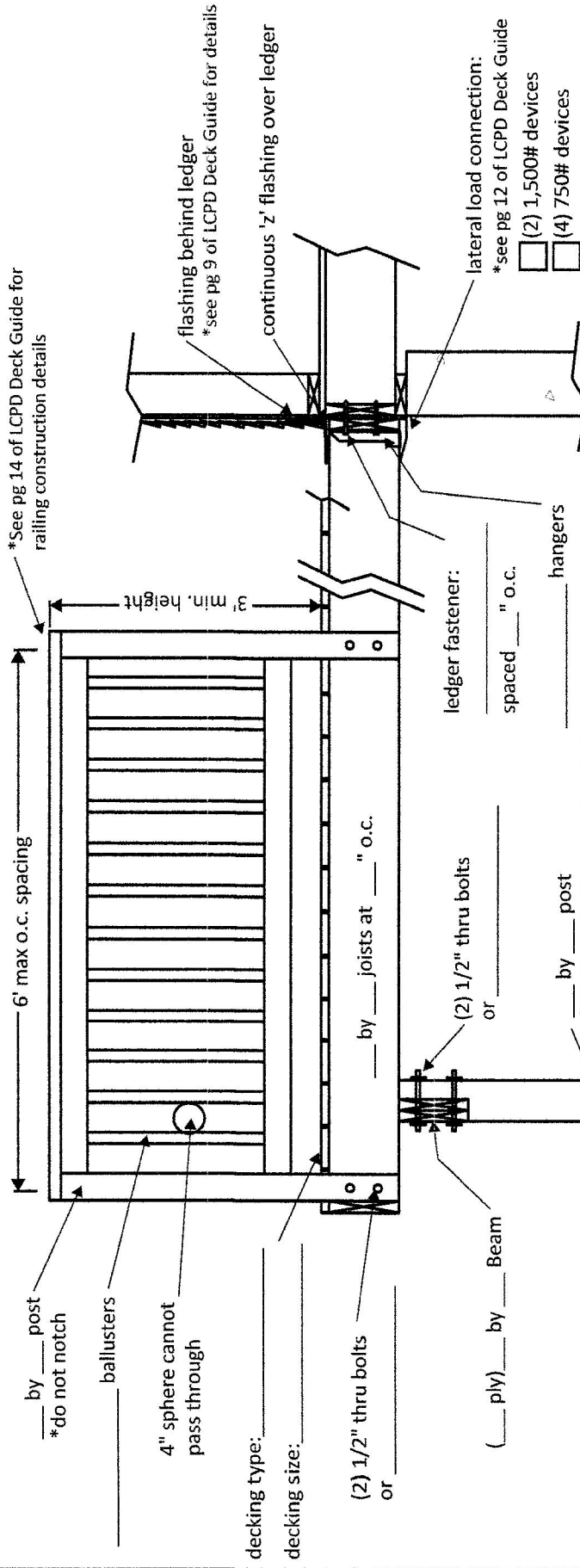
Figure from AWC Prescriptive Residential Deck Guide (2015) | Page 23

# LCPD Residential Deck Detail Form

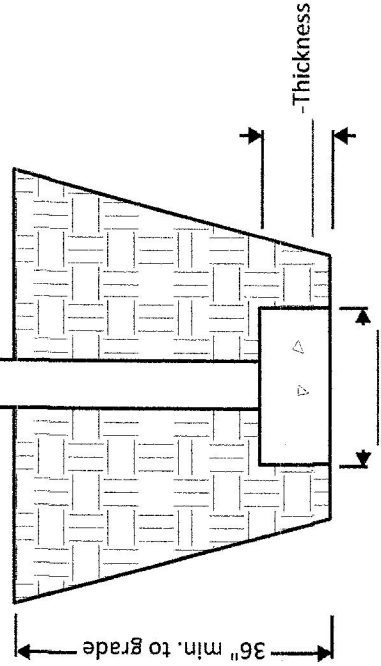
Please fill out all applicable information. Add any non-typical details to this drawing or include details/dimensions/layouts with plan-view sketch.

Job Address: \_\_\_\_\_

\*All lumber to be pressure treated \_\_\_\_\_ (type) & \_\_\_\_\_ (grade) unless noted otherwise



**Additional Notes**





SECTION R507  
EXTERIOR DECKS

**R507.1 Decks.** Wood-framed decks shall be in accordance with this section. For decks using materials and conditions from page 161

**R507.2 Materials.** Materials used for the construction of decks shall comply with this section.

**R507.2.1 Wood materials.** Wood materials shall be No. 2 grade or better lumber, preservative-treated in accordance with Section R317, or *approved*, naturally durable lumber, and termite protected where required in accordance with Section R318. Where design in accordance with Section R301 is provided, wood structural members shall be designed using the wet service factor defined in AWC NDS. Cuts, notches and drilled holes of preservative-treated wood members shall be treated in accordance with Section R317.1.1. All preservative-treated wood products in contact with the ground shall be labeled for such usage.

**R507.2.1.1 Engineered wood products.** Engineered wood products shall be in accordance with Section R502.

**R507.2.2 Plastic composite deck boards, stair treads, guards, or handrails.** Plastic composite exterior deck boards, stair treads, guards and handrails shall comply with the requirements of ASTM D7032 and this section.

**R507.2.2.1 Labeling.** Plastic composite deck boards and stair treads, or their packaging, shall bear a label that indicates compliance with ASTM D7032 and includes the allowable load and maximum allowable span determined in accordance with ASTM D7032. Plastic or composite handrails and guards, or their packaging, shall bear a label that indicates compliance with ASTM D7032 and includes the maximum allowable span determined in accordance with ASTM D7032.

**R507.2.2.2 Flame spread index.** Plastic composite deck boards, stair treads, guards, and handrails shall exhibit a flame spread index not exceeding 200 when tested in accordance with ASTM E84 or UL 723 with the test specimen remaining in place during the test.

**Exception:** Plastic composites determined to be noncombustible.

**R507.2.2.3 Decay resistance.** Plastic composite deck boards, stair treads, guards and handrails containing wood, cellulosic or other biodegradable materials shall be decay resistant in accordance with ASTM D7032.

**R507.2.2.4 Termite resistance.** Where required by Section 318, plastic composite deck boards, stair treads, guards and handrails containing wood, cellulosic or other biodegradable materials shall be termite resistant in accordance with ASTM D7032.

**R507.2.2.5 Installation of plastic composites.** Plastic composite deck boards, stair treads, guards and handrails shall be installed in accordance with this code and the manufacturer's instructions.

**R507.2.3 Fasteners and connectors.** Metal fasteners and connectors used for all decks shall be in accordance with Section R317.3 and Table R507.2.3.

**R507.2.4 Flashing.** Flashing shall be corrosion-resistant metal of nominal thickness not less than 0.019 inch (0.48 mm) or *approved* nonmetallic material that is compatible with the substrate of the structure and the decking materials.

**R507.2.5 Alternate materials.** Alternative materials, including glass and metals, shall be permitted.

**R507.3 Footings.** Decks shall be supported on concrete footings or other approved structural systems designed to accommodate all loads in accordance with Section R301. Deck footings shall be sized to carry the imposed loads from the deck structure to the ground as shown in Figure R507.3. The footing depth shall be in accordance with Section R403.1.4.

**Exception:** Free-standing decks consisting of joists directly supported on grade over their entire length.

**R507.3.1 Minimum size.** The minimum size of concrete footings shall be in accordance with Table R507.3.1, based on the tributary area and allowable soil-bearing pressure in accordance with Table R401.4.1.

TABLE R507.2.3  
FASTENER AND CONNECTOR SPECIFICATIONS FOR DECKS<sup>a, b</sup>

ITEM	MATERIAL	MINIMUM FINISH/COATING	ALTERNATE FINISH/COATING <sup>c</sup>
Nails and timber rivets	In accordance with ASTM F1667	Hot-dipped galvanized per ASTM A153	Stainless steel, silicon bronze or copper
Bolts <sup>c</sup> Lag screws <sup>d</sup> (including nuts and washers)	In accordance with ASTM A307 (bolts), ASTM A563 (nuts), ASTM F844 (washers)	Hot-dipped galvanized per ASTM A153, Class C (Class D for 3/8-inch diameter and less) or mechanically galvanized per ASTM B695, Class 55 or 410 stainless steel	Stainless steel, silicon bronze or copper
Metal connectors	Per manufacturer's specification	ASTM A653 type G185 zinc coated galvanized steel or post hot-dipped galvanized per ASTM A123 providing a minimum average coating weight of 2.0 oz./ft <sup>2</sup> (total both sides)	Stainless steel

For SI: 1 inch = 25.4 mm, 1 foot = 304.8 mm.

- Equivalent materials, coatings and finishes shall be permitted.
- Fasteners and connectors exposed to salt water or located within 300 feet of a salt water shoreline shall be stainless steel.
- Holes for bolts shall be drilled a minimum 1/32 inch and a maximum 1/16 inch larger than the bolt.
- Lag screws 1/2 inch and larger shall be predrilled to avoid wood splitting per the National Design Specification (NDS) for Wood Construction.
- Stainless-steel-driven fasteners shall be in accordance with ASTM F1667.





use 1,500 psi soil bearing

TABLE R507.3.1  
MINIMUM FOOTING SIZE FOR DECKS

LIVE OR GROUND SNOW LOAD <sup>a</sup> (psf)	TRIBUTARY AREA (sq. ft.)	LOAD BEARING VALUE OF SOILS <sup>a, c, d</sup> (psf)											
		1300 <sup>e</sup>				2000 <sup>e</sup>				2500 <sup>e</sup>			
		Side of a square footing (inches)	Diameter of a round footing (inches)	Thickness (inches)	Side of a square footing (inches)	Diameter of a round footing (inches)	Thickness (inches)	Side of a square footing (inches)	Diameter of a round footing (inches)	Side of a square footing (inches)	Diameter of a round footing (inches)	Thickness (inches)	Side of a square footing (inches)
40	20	12	14	6	12	14	6	12	14	12	14	6	12
	40	14	16	6	12	14	6	12	14	12	14	6	12
	60	17	19	6	15	17	6	13	15	12	14	6	12
	80	20	22	7	17	19	6	15	17	14	16	6	12
	100	22	25	8	19	21	6	17	19	15	17	6	12
	120	24	27	9	21	23	7	19	21	17	19	6	12
	140	26	29	10	22	25	8	20	23	18	21	6	12
	160	28	31	11	24	27	9	21	24	20	22	7	12
50	20	12	14	6	12	14	6	12	14	12	14	6	12
	40	15	17	6	13	15	6	12	14	12	14	6	12
	60	19	21	6	16	18	6	14	16	13	15	6	12
	80	21	24	8	19	21	6	17	19	15	17	6	12
	100	24	27	9	21	23	7	19	21	17	19	6	12
	120	26	30	10	23	26	8	20	23	19	21	6	12
	140	28	32	11	25	28	9	22	25	20	23	7	12
	160	30	34	12	26	30	10	24	27	21	24	8	12
60	20	12	14	6	12	14	6	12	14	12	14	6	12
	40	16	19	6	14	16	6	13	14	12	14	6	12
	60	20	23	7	17	20	6	16	18	14	16	6	12
	80	23	26	9	20	23	7	18	20	16	19	6	12
	100	26	29	10	22	25	8	20	23	18	21	6	12
	120	28	32	11	25	28	9	22	25	20	23	7	12
	140	31	35	12	27	30	10	24	27	22	24	8	12
	160	33	37	13	28	32	11	25	29	23	26	9	12
70	20	12	14	6	12	14	6	12	14	12	14	6	12
	40	18	20	6	15	17	6	14	15	12	14	6	12
	60	21	24	8	19	21	6	17	19	15	17	6	12
	80	25	28	9	21	24	8	19	22	18	20	6	12
	100	28	31	11	24	27	9	21	24	20	22	7	12
	120	30	34	12	26	30	10	24	27	21	24	8	12
	140	33	37	13	28	32	11	25	29	23	26	9	12
	160	35	40	15	30	34	12	27	31	25	28	9	12

For SI: 1 inch = 25.4 mm, 1 square foot = 0.0929 m<sup>2</sup>, 1 pound per square foot = 0.0479 kPa.

a. Interpolation permitted, extrapolation not permitted.

b. Based on highest load case: Dead + Live or Dead + Snow.

c. Assumes minimum square footing to be 12 inches x 12 inches x 6 inches for 6 x 6 post.

d. If the support is a brick or CMU pier, the footing shall have a minimum 2-inch projection on all sides.

e. Area, in square feet, of deck surface supported by post and footings.

**R507.5 Deck Beams.** Maximum allowable spans for wood deck beams, as shown in Figure R507.5, shall be in accordance with Table R507.5. Beam plies shall be fastened with two rows of 10d (3-inch × 0.128-inch) nails minimum at 16 inches (406 mm) on center along each edge. Beams shall be permitted to cantilever at each end up to one-fourth of the allowable beam span. Deck beams of other materials shall be permitted where designed in accordance with accepted engineering practices.

**R507.5.1 Deck beam bearing.** The ends of beams shall have not less than 1½ inches (38 mm) of bearing on wood or metal and not less than 3 inches (76 mm) of bearing on concrete or masonry for the entire width of the beam. Where multiple-span beams bear on intermediate posts, each ply must have full bearing on the post in accordance with Figures R507.5.1(1) and R507.5.1(2).

**R507.5.2 Deck beam connection to supports.** Deck beams shall be attached to supports in a manner capable of transferring vertical loads and resisting horizontal displacement. Deck beam connections to wood posts shall be in accordance with Figures R507.5.1(1) and R507.5.1(2). Manufactured post-to-beam connectors shall be sized for the post and beam sizes. Bolts shall have washers under the head and nut.

**R507.6 Deck joists.** Maximum allowable spans for wood deck joists, as shown in Figure R507.6, shall be in accordance with Table R507.6. The maximum joist spacing shall be limited by the decking materials in accordance with Table R507.7. The maximum joist cantilever shall be limited to one-fourth of the joist span or the maximum cantilever length specified in Table R507.6, whichever is less.

**R507.6.1 Deck joist bearing.** The ends of joists shall have not less than 1½ inches (38 mm) of bearing on wood or metal and not less than 3 inches (76 mm) of bearing on concrete or masonry over its entire width. Joists bearing on top of a multiple-ply beam or ledger shall be fastened in accordance with Table R602.3(1). Joists bearing on top of a single-ply beam or ledger shall be attached by a mechanical connector. Joist framing into the side of a beam or ledger board shall be supported by approved joist hangers.

**R507.6.2 Deck joist lateral restraint.** Joist ends and bearing locations shall be provided with lateral resistance to prevent rotation. Where lateral restraint is provided by joist hangers or blocking between joists, their depth shall equal not less than 60 percent of the joist depth. Where lateral restraint is provided by rim joists, they shall be secured to the end of each joist with not fewer than three 10d (3-inch by 0.128-inch) (76 mm by 3.3 mm) nails or three No. 10x 3-inch (76 mm) long wood serews.

**R507.7 Decking.** Maximum allowable spacing for joists supporting decking shall be in accordance with Table R507.7. Wood decking shall be attached to each supporting member with not less than two 8d threaded nails or two No. 8 wood screws. Other approved decking or fastener systems shall be installed in accordance with the manufacturer's installation requirements.

**R507.8 Vertical and lateral supports.** Where supported by attachment to an exterior wall, decks shall be positively anchored to the primary structure and designed for both vertical and lateral loads. Such attachment shall not be accomplished by the use of toenails or nails subject to withdrawal. For decks with cantilevered framing members, connection to exterior walls or other framing members shall be designed and constructed to resist uplift resulting from the full live load specified in Table R301.5 acting on the cantilevered portion of the deck. Where positive connection to the primary building structure cannot be verified during inspection, decks shall be self-supporting.

**R507.9 Vertical and lateral supports at band joist.** Vertical and lateral supports for decks shall comply with this section.

**R507.9.1 Vertical supports.** Vertical loads shall be transferred to band joists with ledgers in accordance with this section.

**R507.9.1.1 Ledger details.** Deck ledgers shall be a minimum 2-inch by 8-inch (51 mm by 203 mm) nominal, pressure-preservative-treated Southern pine, incised pressure-preservative-treated hem-fir, or approved, naturally durable, No. 2 grade or better lumber. Deck ledgers shall not support concentrated loads from beams or girders. Deck ledgers shall not be supported on stone or masonry veneer.

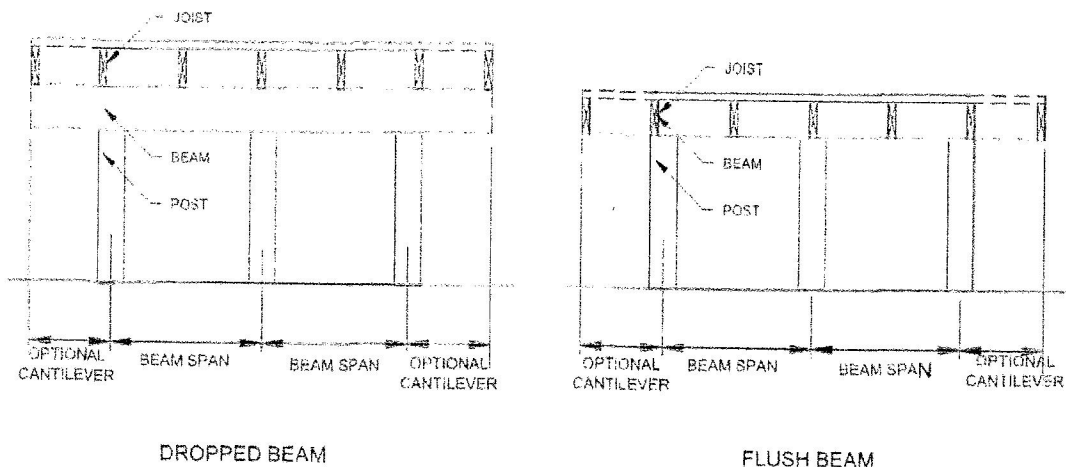
**R507.9.1.2 Band joist details.** Band joists supporting a ledger shall be a minimum 2-inch-nominal (51 mm), solid-sawn, spruce-pine-fir or better lumber or a minimum 1-inch by 9½-inch (25 mm × 241 mm) dimensional, Douglas fir or better, laminated veneer lumber. Band joists shall bear fully on the primary structure capable of supporting all required loads.

**R507.9.1.3 Ledger to band joist details.** Fasteners used in deck ledger connections in accordance with Table R507.9.1.3(1) shall be hot-dipped galvanized or stainless steel and shall be installed in accordance with Table R507.9.1.3(2) and Figures R507.9.1.3(1) and R507.9.1.3(2).

**R507.9.1.4 Alternate ledger details.** Alternate framing configurations supporting a ledger constructed to meet the load requirements of Section R301.5 shall be permitted.

**R507.9.2 Lateral connection.** Lateral loads shall be transferred to the ground or to a structure capable of transmitting them to the ground. Where the lateral load connection is provided in accordance with Figure R507.9.2(1), hold-down tension devices shall be installed in not less than two locations per deck, within 24 inches (610 mm) of each end of the deck. Each device shall have an allowable stress design capacity of not less than 1,500 pounds (6672 N). Where the lateral load connections are provided in accordance with Figure R507.9.2(2), the hold-down tension devices shall be installed in not less than four locations per deck, and each device shall have an allowable stress design capacity of not less than 750 pounds (3336 N).

# FLOORS



**FIGURE R507.5**  
**TYPICAL DECK JOIST SPANS**

**TABLE R507.5**  
**DECK BEAM SPAN LENGTHS<sup>a, b, g</sup> (feet - inches)**

SPECIES <sup>c</sup>	SIZE <sup>d</sup>	DECK JOIST SPAN LESS THAN OR EQUAL TO: (feet)						
		6	8	10	12	14	16	18
Southern pine	1 - 2 × 6	4-11	4-0	3-7	3-3	3-0	2-10	2-8
	1 - 2 × 8	5-11	5-1	4-7	4-2	2-10	3-7	3-5
	1 - 2 × 10	7-0	6-0	5-5	4-11	4-7	4-3	4-0
	1 - 2 × 12	8-3	7-1	6-4	5-10	5-5	5-0	4-9
	2 - 2 × 6	6-11	5-11	5-4	4-10	4-6	4-3	4-0
	2 - 2 × 8	8-9	7-7	6-9	6-2	5-9	5-4	5-0
	2 - 2 × 10	10-4	9-0	8-0	7-4	6-9	6-4	6-0
	2 - 2 × 12	12-2	10-7	9-5	8-7	8-0	7-6	7-0
	3 - 2 × 6	8-2	7-5	6-8	6-1	5-8	5-3	5-0
	3 - 2 × 8	10-10	9-6	8-6	7-9	7-2	6-8	6-4
	3 - 2 × 10	13-0	11-3	10-0	9-2	8-6	7-11	7-6
Douglas fir-larch <sup>e</sup> , hem-fir <sup>e</sup> , spruce-pine-fir <sup>e</sup> , redwood, western cedars, ponderosa pine <sup>f</sup> , red pine <sup>f</sup>	3 × 6 or 2 - 2 × 6	5-5	4-8	4-2	3-10	3-6	3-1	2-9
	3 × 8 or 2 - 2 × 8	6-10	5-11	5-4	4-10	4-6	4-1	3-8
	3 × 10 or 2 - 2 × 10	8-4	7-3	6-6	5-11	5-6	5-1	4-8
	3 × 12 or 2 - 2 × 12	9-8	8-5	7-6	6-10	6-4	5-11	5-7
	4 × 6	6-5	5-6	4-11	4-6	4-2	3-11	3-8
	4 × 8	8-5	7-3	6-6	5-11	5-6	5-2	4-10
	4 × 10	9-11	8-7	7-8	7-0	6-6	6-1	5-8
	4 × 12	11-5	9-11	8-10	8-1	7-6	7-0	6-7
	3 - 2 × 6	7-4	6-8	6-0	5-6	5-1	4-9	4-6
	3 - 2 × 8	9-8	8-6	7-7	6-11	6-5	6-0	5-8
	3 - 2 × 10	12-0	10-5	9-4	8-6	7-10	7-4	6-11
	3 - 2 × 12	13-11	12-1	10-9	9-10	9-1	8-6	8-1

For SI: 1 inch = 25.4 mm, 1 foot = 304.8 mm, 1 pound per square foot = 0.0479 kPa, 1 pound = 0.454 kg.

a. Ground snow load, live load = 40 psf, dead load = 10 psf, L/Δ = 360 at main span, L/Δ = 180 at cantilever with a 220-pound point load applied at the end.

b. Beams supporting deck joists from one side only.

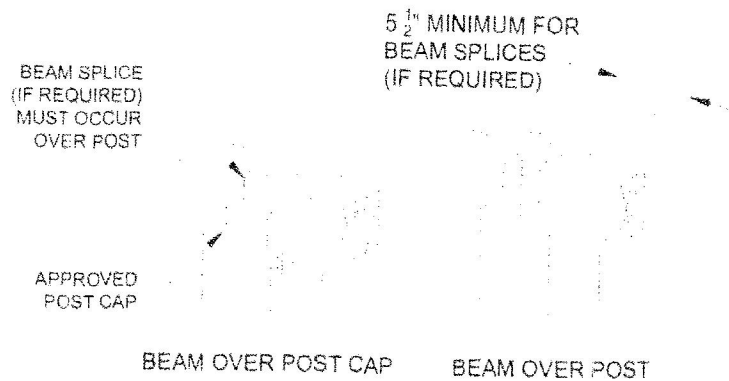
c. No. 2 grade, wet service factor.

d. Beam depth shall be greater than or equal to depth of joists with a flush beam condition.

e. Includes incising factor.

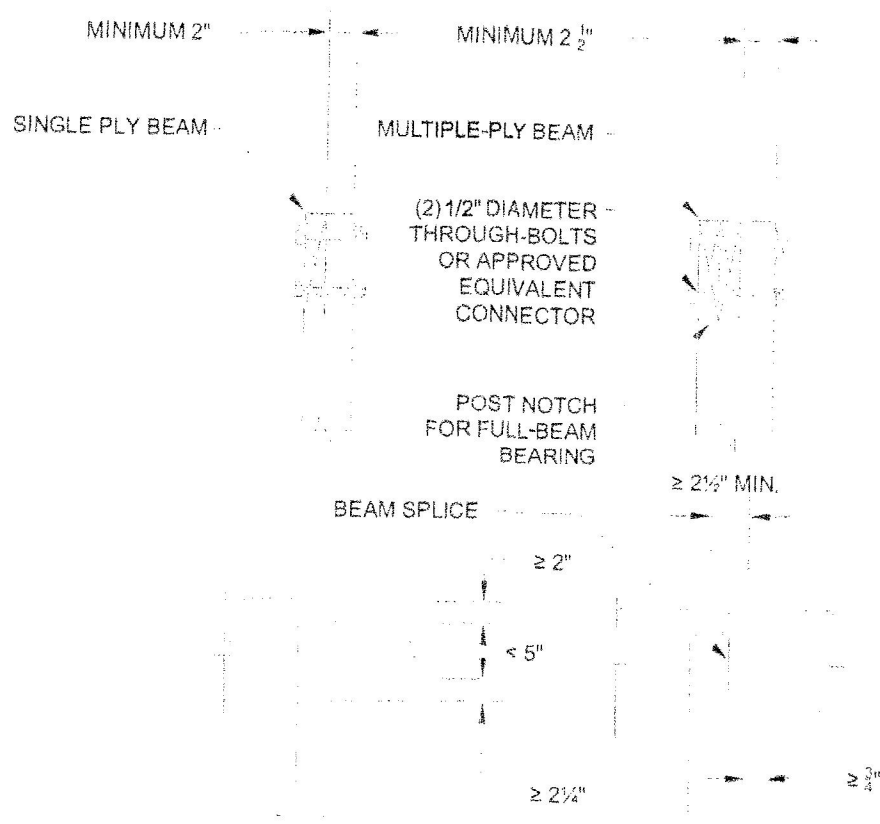
f. Northern species. Incising factor not included.

g. Beam cantilevers are limited to the adjacent beam's span divided by 4.



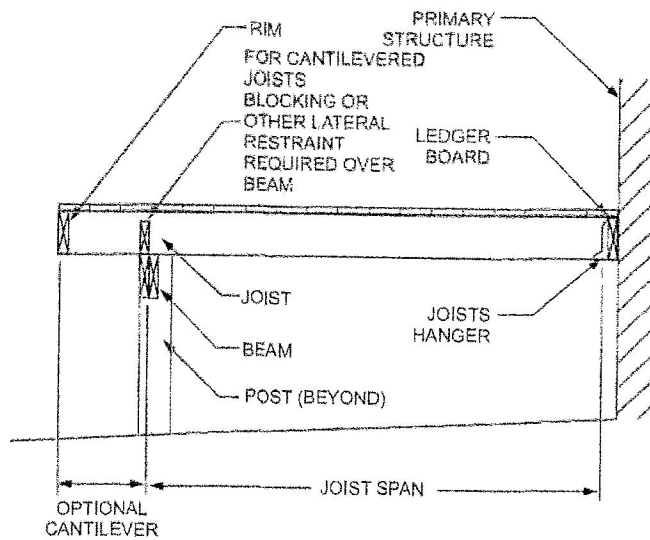
For SI: 1 inch = 25.4 mm.

**FIGURE R507.5.1(1)**  
**DECK BEAM TO DECK POST**

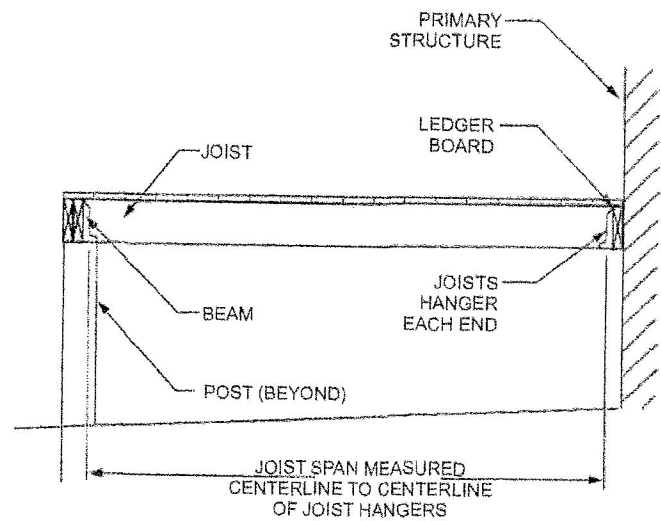


For SI: 1 inch = 25.4 mm.

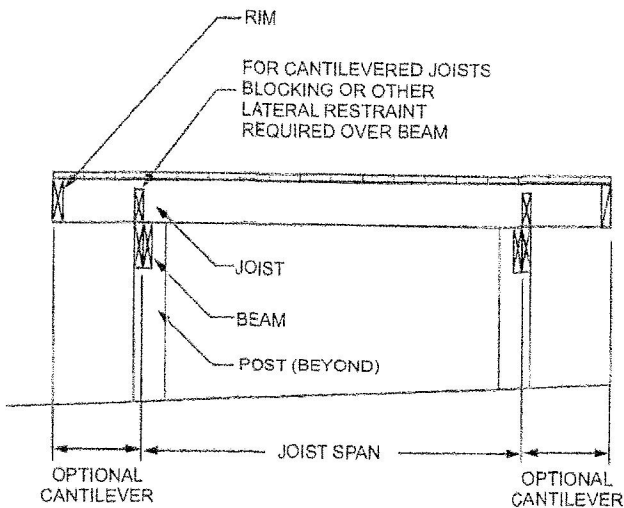
**FIGURE R507.5.1(2)**  
**NOTCHED POST-TO-BEAM CONNECTION**



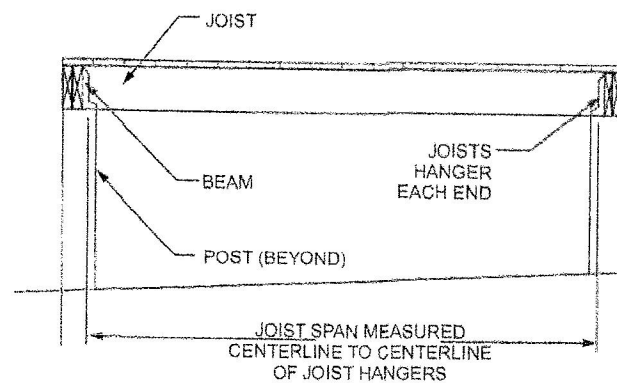
CANTILEVERED JOISTS WITH DROPPED BEAM



JOISTS WITH FLUSH BEAM



JOISTS ON FREE-STANDING DECK WITH DROPPED BEAM



JOISTS ON FREE-STANDING DECK WITH FLUSH BEAM

FIGURE R507.6  
TYPICAL DECK JOIST SPANS

**TABLE R507.6**  
**DECK JOIST SPANS FOR COMMON LUMBER SPECIES (ft. - in.)**

SPECIES <sup>a</sup>	SIZE	ALLOWABLE JOIST SPAN <sup>b</sup>			MAXIMUM CANTILEVER <sup>c,f</sup>		
		SPACING OF DECK JOISTS (Inches)			SPACING OF DECK JOISTS WITH CANTILEVERS <sup>c</sup> (Inches)		
		12	16	24	12	16	24
Southern pine	2 × 6	9-11	9-0	7-7	1-3	1-4	1-6
	2 × 8	13-1	11-10	9-8	2-1	2-3	2-5
	2 × 10	16-2	14-0	11-5	3-4	3-6	2-10
	2 × 12	18-0	16-6	13-6	4-6	4-2	3-4
Douglas fir-larch <sup>d</sup> , hem-fir <sup>d</sup> , spruce-pine-fir <sup>d</sup>	2 × 6	9-6	8-8	7-2	1-2	1-3	1-5
	2 × 8	12-6	11-1	9-1	1-11	2-1	2-3
	2 × 10	15-8	13-7	11-1	3-1	3-5	2-9
	2 × 12	18-0	15-9	12-10	4-6	3-11	3-3
Redwood, western cedars, ponderosa pine <sup>e</sup> , red pine <sup>e</sup>	2 × 6	8-10	8-0	7-0	1-0	1-1	1-2
	2 × 8	11-8	10-7	8-8	1-8	1-10	2-0
	2 × 10	14-11	13-0	10-7	2-8	2-10	2-8
	2 × 12	17-5	15-1	12-4	3-10	3-9	3-1

For SI: 1 inch = 25.4 mm, 1 foot = 304.8 mm, 1 pound per square foot = 0.0479 kPa, 1 pound = 0.454 kg.

a. No. 2 grade with wet service factor.

b. Ground snow load, live load = 40 psf, dead load = 10 psf,  $L/\Delta = 360$ .

c. Ground snow load, live load = 40 psf, dead load = 10 psf,  $L/\Delta = 360$  at main span,  $L/\Delta = 180$  at cantilever with a 220-pound point load applied to end.

d. Includes incising factor.

e. Northern species with no incising factor.

f. Cantilevered spans not exceeding the nominal depth of the joist are permitted.

**TABLE R507.7**  
**MAXIMUM JOIST SPACING FOR DECKING**

DECKING MATERIAL TYPE AND NOMINAL SIZE	MAXIMUM ON-CENTER JOIST SPACING	
	Decking perpendicular to joist	Decking diagonal to joist <sup>a</sup>
1 1/4-inch-thick wood	16 inches	12 inches
2-inch-thick wood	24 inches	16 inches
Plastic composite	In accordance with Section R507.2	In accordance with Section R507.2

For SI: 1 inch = 25.4 mm, 1 foot = 304.8 mm, 1 degree = 0.01745 rad.

a. Maximum angle of 45 degrees from perpendicular for wood deck boards.

**TABLE R507.9.1.3(1)**  
**DECK LEDGER CONNECTION TO BAND JOIST<sup>a, b</sup>**  
 (Deck live load = 40 psf, deck dead load = 10 psf, snow load ≤ 40 psf)

CONNECTION DETAILS	JOIST SPAN						
	6' and less	6'1" to 8'	8'1" to 10'	10'1" to 12'	12'1" to 14'	14'1" to 16'	16'1" to 18'
	On-center spacing of fasteners						
1/2-inch diameter lag screw with 1/2-inch maximum sheathing <sup>c, d</sup>	30	23	18	15	13	11	10
1/2-inch diameter bolt with 1/2-inch maximum sheathing <sup>d</sup>	36	36	34	29	24	21	19
1/2-inch diameter bolt with 1-inch maximum sheathing <sup>e</sup>	36	36	29	24	21	18	16

For SI: 1 inch = 25.4 mm, 1 foot = 304.8 mm, 1 pound per square foot = 0.0479 kPa.

a. Ledgers shall be flashed in accordance with Section R703.4 to prevent water from contacting the house band joist.

b. Snow load shall not be assumed to act concurrently with live load.

c. The tip of the lag screw shall fully extend beyond the inside face of the band joist.

d. Sheathing shall be wood structural panel or solid sawn lumber.

e. Sheathing shall be permitted to be wood structural panel, gypsum board, fiberboard, lumber or foam sheathing. Up to 1/2-inch thickness of stacked washers shall be permitted to substitute for up to 1/2 inch of allowable sheathing thickness where combined with wood structural panel or lumber sheathing.

**TABLE R507.9.1.3(2)**  
**PLACEMENT OF LAG SCREWS AND BOLTS IN DECK LEDGERS AND BAND JOISTS**

MINIMUM END AND EDGE DISTANCES AND SPACING BETWEEN ROWS				
	TOP EDGE	BOTTOM EDGE	ENDS	ROW SPACING
Ledger <sup>a</sup>	2 inches <sup>d</sup>	3/4 inch	2 inches <sup>b</sup>	1 5/8 inches <sup>b</sup>
Band Joist <sup>c</sup>	3/4 inch	2 inches	2 inches <sup>b</sup>	1 5/8 inches <sup>b</sup>

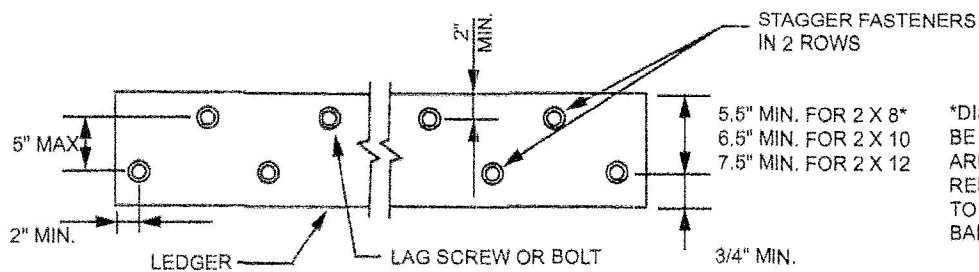
For SI: 1 inch = 25.4 mm.

a. Lag screws or bolts shall be staggered from the top to the bottom along the horizontal run of the deck ledger in accordance with Figure R507.9.1.3(1).

b. Maximum 5 inches.

c. For engineered rim joists, the manufacturer's recommendations shall govern.

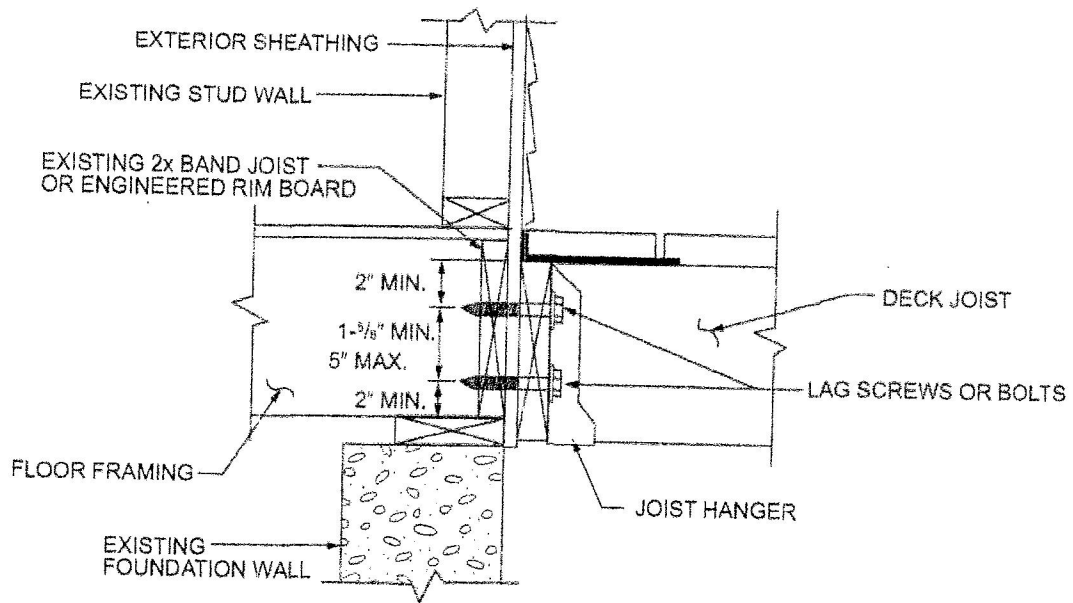
d. The minimum distance from bottom row of lag screws or bolts to the top edge of the ledger shall be in accordance with Figure R507.9.1.3(1).



For SI: 1 inch = 25.4 mm.

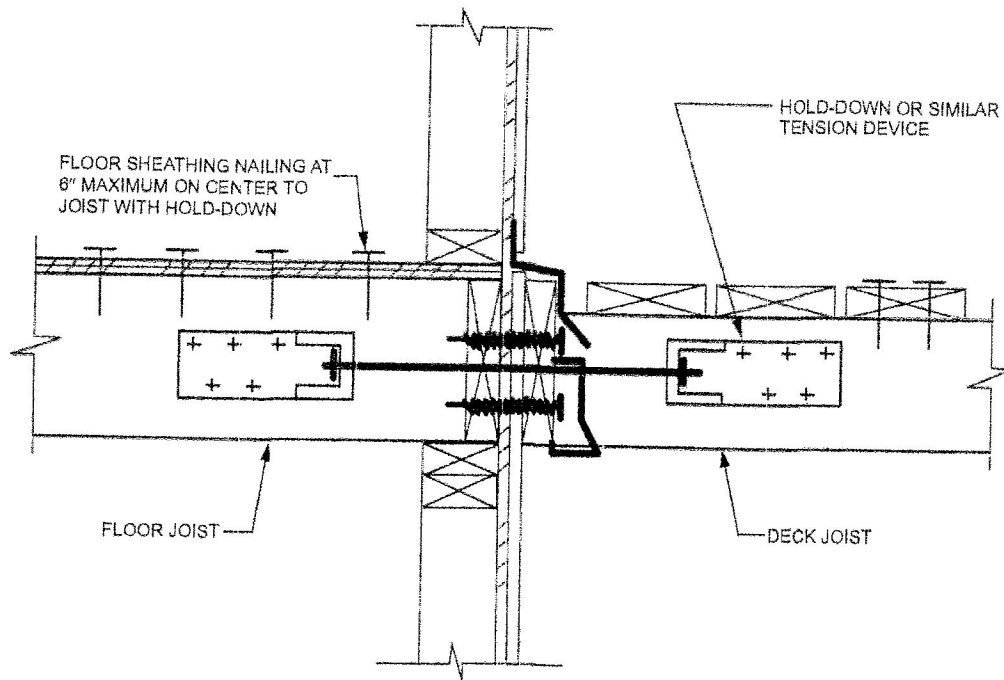
**FIGURE R507.9.1.3(1)**  
**PLACEMENT OF LAG SCREWS AND BOLTS IN LEDGERS**





For SI: 1 inch = 25.4 mm.

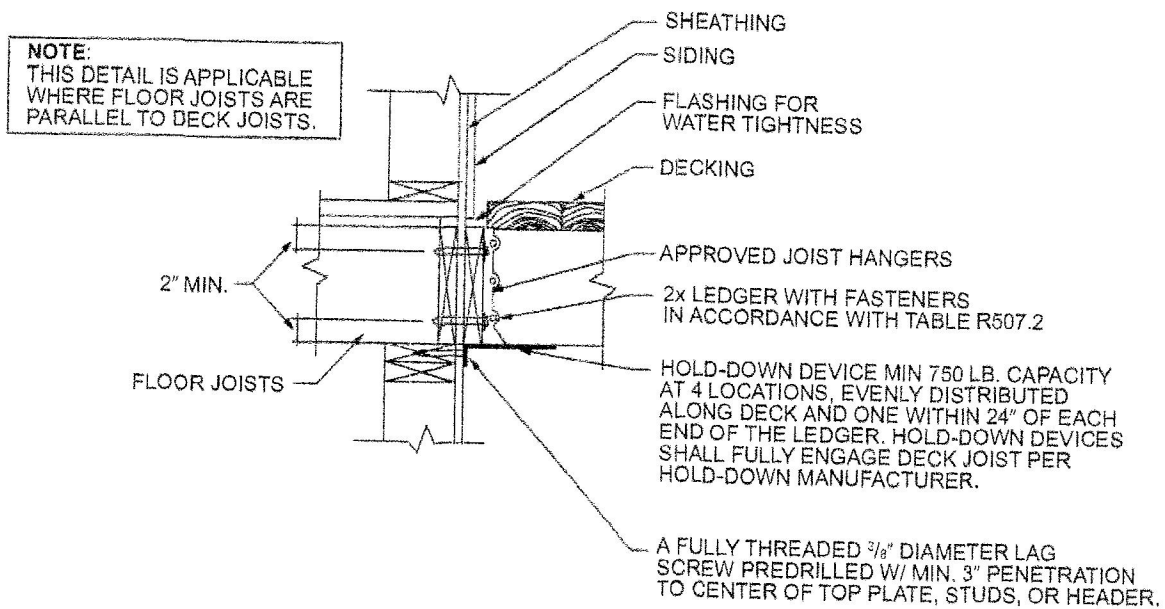
FIGURE R507.9.1.3(2)  
PLACEMENT OF LAG SCREWS AND BOLTS IN BAND JOISTS



For SI: 1 inch = 25.4 mm.

FIGURE R507.9.2(1)  
DECK ATTACHMENT FOR LATERAL LOADS





For SI: 1 inch = 25.4 mm, 1 foot = 304.8 mm.

**FIGURE R507.9.2(2)**  
**DECK ATTACHMENT FOR LATERAL LOADS**